



**SMASH** | 200/25  
aselsan

25 MM REMOTE CONTROLLED  
STABILIZED GUN SYSTEM

#NavalSystems



REMOTE CONTROL  
HIGH ACCURACY STABILIZATION  
AUTOMATIC BALISTIC CALCULATION  
HIGH HIT PROBABILITY  
INDEPENDENT ELECTRO-OPTIC SIGHT  
ADVANCED GRAPHICAL USER INTERFACE  
INTEGRATED TRAINING SIMULATOR  
EFFECTIVE AGAINST ASYMMETRIC THREATS



**aselsan**

## 25 MM REMOTE CONTROLLED STABILIZED GUN SYSTEM

### General Specifications

- Remote Control
- High Accuracy Dual-Axis Gyro Stabilized Independent Electro Optic Sight
- Automatic Ballistic Calculation
- High Hit Probability
- High Accuracy Stabilization
- Effective against asymmetric threats
- Day/night operation under various weather and terrain conditions
- Surveillance mode (without aiming the gun)
- Advanced graphical user interface
- Picture-In-Picture (PIP)
- Integration with platform sensors (Radar, Wind Sensor, etc.)
- Manual operation
- Built-in Test Capabilities
- Modular structure for upgrades and options
- High Reliability
- No deck penetration (except cables)
- Embedded Video Recording Capabilities
- Easy to integrate
- Back-Up Battery Unit

### Sub-Units

- Stabilized Turret
- System Operating Panel
- 19" Panel PC Display
- Gun Control Unit
- Mission Computer
- Commander Control Unit
- Independent Stabilized Optical Director
- Electro-Optic Sight
  - Thermal Camera
  - TV Camera
  - Laser Range Finder
- Manuel Control Panel
- Servo Controller
- Power Unit
- Safety Switch
- Slip Ring (Optional)
- Electronic Control and Interface Unit

### Technical Data

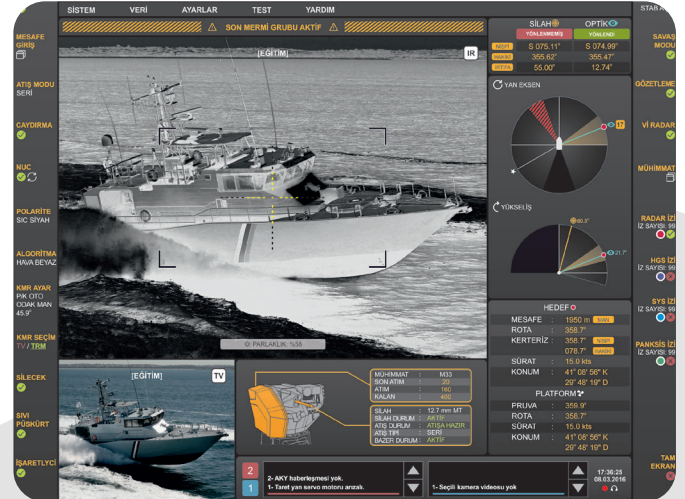
- Turret Weight : <1350 kg  
(Including gun and ammunition)
- Gun : 25mm KBA Automatic Cannon
- Rate of fire : 450-600 rounds/min
- Ammunition Feeding : Dual
- Ammunition Capacity : 2 x 125pcs
- Gun Elevation Angle :  $-15(\pm 2)^\circ$  /  $+55(\pm 2)^\circ$
- Gun Bearing Angle :  $\pm 135^\circ$  (without slipping)  
: n x  $360^\circ$  (with slipping)
- Gun Angular Speed :  $60^\circ/s$
- EO Elevation Angle :  $-30(\pm 2)^\circ$  /  $+80(\pm 2)^\circ$
- EO Traverse Angle :  $\pm 10^\circ$  (with respect to gun turret)
- EO Angular Speed (max.):  $60^\circ/s$
- Power Supply : 110/220 VAC 50/60Hz

### Applications

- Effective protection against asymmetric threats
- Effective protection against terrorism and smuggling
- Coastal and Base defense

### Naval Platforms

- Warships
- Unmanned Naval Vessels
- Coast Guard Boats



Specifications are subject to change without any notice. | All tolerances are within  $\pm 10\%$ .